



PS350

Hermetic Analog Pressure Transmitter

Data Sheet



Fully welded pressure transmitter with industrial connection

Benefits

- Robust stainless steel design with hermetic port (No internal O-ring sealing)
- High proof and burst pressure capabilities

Typical Applications

- General industrial applications in the mid and high pressure ranges
- Hydraulic and pneumatic pressure monitoring
- Injection molding machines

Pressure Measuring Range: 0–600 bar (0–8702 psi)

Temperature Range: -40°–125°C (-40°–257°F)

Accuracy: $\pm 0.25\%$ FS @25°C



PS350 Performance Specification

The PS350 pressure transmitter is the ideal solution for customers with challenging measuring requirements for general industrial applications in the mid and high pressure ranges. Utilizing the Strain Gauge measuring principle, the PS350 features a wide range of ports, connectors, and analog electrical outputs for ease of integration in various industrial applications.

The high-quality stainless-steel design features a hermetic port with no internal O-ring seals making it compatible with most media and suitable for harsh environments. With extreme shock and vibration capabilities, a wide operating temperature range, and high proof and burst pressures; the PS350 is ideal for industrial applications including injection molding, CO2 HVAC systems, and other hydraulic or pneumatic applications.

Packing size 50 pcs or a multiple of it (MOQ 500).

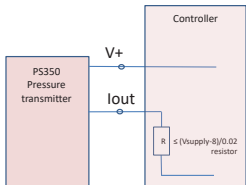
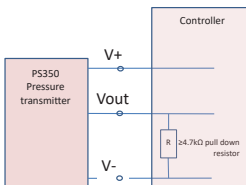
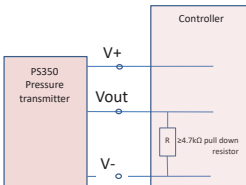
Specification	Measuring Range 1	Measuring Range 2	Measuring Range 3	Measuring Range 4
Measuring Range	0–10 bar (0–145 psi)	0–16 bar (0–232 psi)	0–25 bar (0–362 psi)	0–250 bar (0–3625 psi)
Overpressure	60 bar (870 psi)	60 bar (870 psi)	60 bar (870 psi)	500 bar (7251 psi)
Burst Pressure	200 bar (2900 psi)	200 bar (2900 psi)	200 bar (2900 psi)	2500 bar (36259 psi)
Accuracy [\pm %FS] @25°C ⁽¹⁾	$\pm 0.25\%$ FS	$\pm 0.25\%$ FS	$\pm 0.25\%$ FS	$\pm 0.25\%$ FS
Response Time	< 2 ms	< 2 ms	< 2 ms	< 2 ms
Long-term Stability	$\leq 0.1\%$ FSR/a	$\leq 0.1\%$ FSR/a	$\leq 0.1\%$ FSR/a	$\leq 0.1\%$ FSR/a

Specification	Measuring Range 5	Measuring Range 6
Measuring Range	0–400 bar (0–5801 psi)	0–600 bar (0–5702 psi)
Overpressure	800 bar (11603 psi)	1200 bar (17404 psi)
Burst Pressure	4000 bar (58015 psi)	4000 bar (58015 psi)
Accuracy [\pm %FS] @25°C ⁽¹⁾	$\pm 0.25\%$ FS	$\pm 0.25\%$ FS
Response Time	< 2 ms	< 2 ms
Long-term Stability	$\leq 0.1\%$ FSR/a	$\leq 0.1\%$ FSR/a

(1) Best fit straight line accuracy includes errors from non-linearity, non-repeatability, and hysteresis

Environmental	
Media Temperature	-40°–125°C \ -40°–257°F
Ambient Temperature Range Temperature	-40°–100°C \ -40°–212°F
Storage Temperature	-40°–100°C \ -40°–212°F
Protection Class	IP65–IP69
Notes	See connector options
Vibration Resistance	IBC 60068-2-6, 30g (10–2000 Hz)
Shock Resistance	BN 60068-2-27, 500g
Load Change	> 10 Mio Cycles

Material Specifications	
Transducer	Stainless Steel (AISI 630/1.4542)
Housing	Stainless Steel (AISI 630/1.4542)
Seals	FKM (Viton)
Weight ⁽¹⁾	70g

Electrical Specifications			
Output Signal	4–20 mA	0–10 VDC	0.5–4.5 VDC
Operating Supply Voltage	8–32 VDC	12–32 VDC	8–32 VDC
Overvoltage Protection	MIN 36 VDC	MIN 36 VDC	MIN 36 VDC
Load Resistance	$\leq (V_s - 8 \text{ VDC}) / (20 \text{ mA})$	$\geq 4.7 \text{ k}\Omega$ (Pull Down)	$\geq 4.7 \text{ k}\Omega$ (Pull Down)
Circuit Diagram			



PS350 Ordering Options

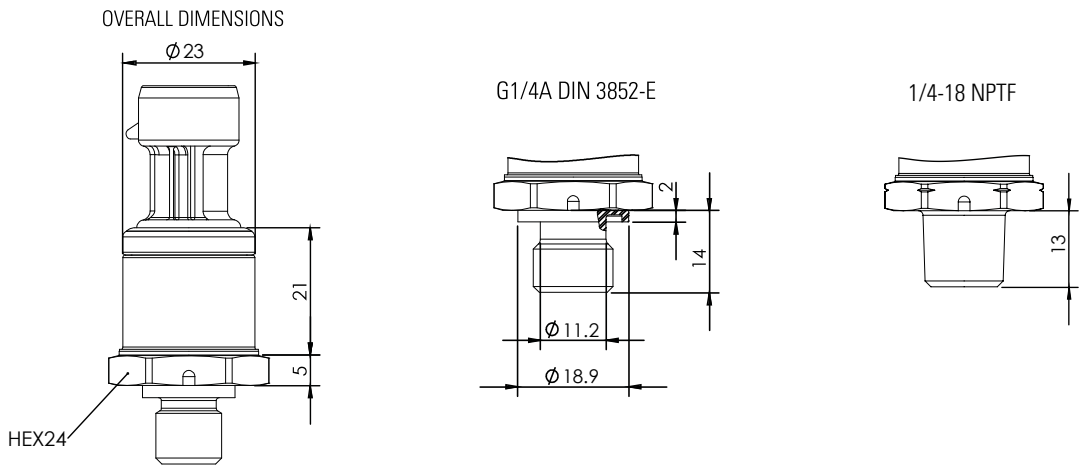
Example: PS350-31AA-1A250BA

This example comes with a G1/4A thread with an external FKM O-ring seal, DIN A connector, 4-20 mA output, and 0–250 bar pressure range (gauge).

PS350		3	1	A	A	-	1	A	250	B	A
Family	PS350										
SEA Type	0–29 bar	1									
	101–250 bar	3									
	251–400 bar	4									
	401–600 bar	5									
EMA Type	Current output		1								
	Vreg output		3								
Pressure Port	G1/4A DIN 3852-E			A							
	1/4-18NPT			D							
Electrical Connector	DIN 175301-803 Form A (18mm)				A						
	GTMS M12x1 4-Pole				H						
External Sealing	FKM (Viton) O-ring (only for G1/4 pressure port)						1				
Electrical Output/Input	4-20 mA / 8–32Vdc							A			
	0-10Vdc / 12-32Vdc							D			
	0.5-4.5Vdc / 8–32VDC							F			
Pressure Range	0–10 bar								10		
	0–16 bar								16		
	0–25 bar								25		
	0–250 bar								250		
	0–400 bar								400		
	0–600 bar								600		
Pressure Type	Non seal gauge									B	
	Seal gauge (when GTMS connector (H) is selected)									S	
Mating Connector & Snubber	Mating connector and snubber with 0.5 damping hole										A
	None										N

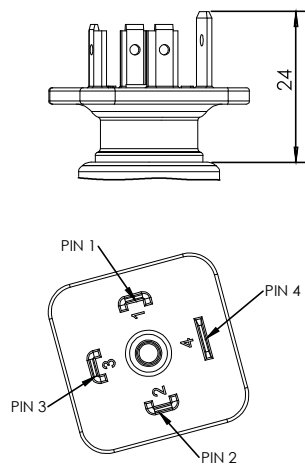
*Further pressure ranges, connectors, and pressure ports on requests

Pressure Ports



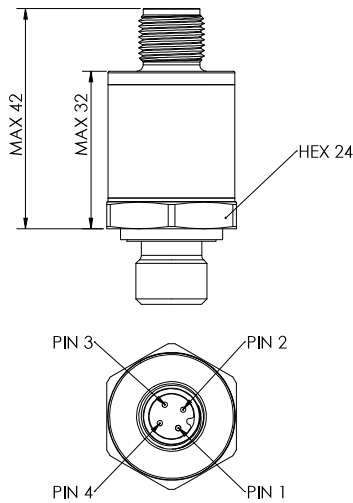
Electrical Connectors

A: DIN 175301-803 FORM A(18mm)
IP65



Output Type	Pin 1	Pin 2	Pin 3	Pin 4
Voltage	V+	V-	Vout	...
Current	V+	Iout

GTMS-4POLE M12x1 CONNECTOR
IP69



Output Type	Pin 1	Pin 2	Pin 3	Pin 4
Voltage	V+	...	V-	Vout
Current	V+	...	Iout	...

Documents

Document Type	Document Number
Data Sheet	10.80.0642
CE Declaration of Conformity	12.60.0170